

The West Midlands Rail Freight Interchange Order 201X
Technical Appendix 9.5 - Historic Landscape Character Map
Regulation 5(2)(a)
Staffordshire County Council - September 2016

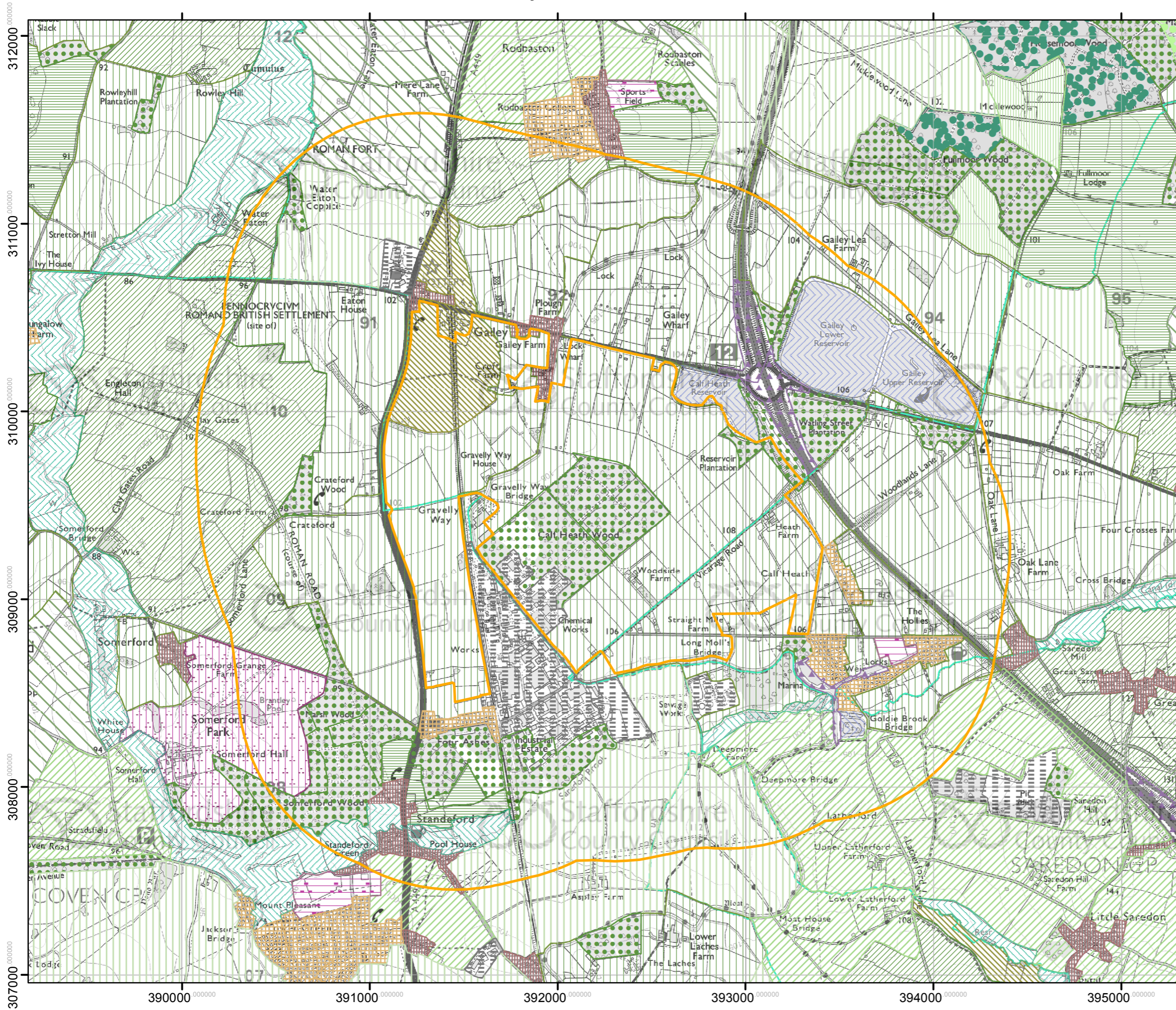


West Midlands
Interchange

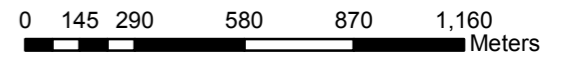
Four Ashes Ltd


Staffordshire County Council Historic Environment Record

Refined Historic Landscape Character West Midlands Interchange Site



-  18th/19th Century Planned Enclosure
-  Ancient Woodland
-  Artificial Water Bodies
-  Communications
-  Early Irregular Enclosure
-  Early Reorganised Piecemeal Enclosure
-  Historic Parks and Gardens
-  Industrial and Extractive
-  Miscellaneous Floodplain Fields
-  Other Parkland
-  Piecemeal Enclosure
-  Plantations
-  Post 1880s Reorganised Piecemeal Enclosure
-  Post 1880s Settlement
-  Post 1880s Small Replanned Enclosure
-  Post War Amalgamated Fields
-  Pre 1880s Settlement
-  Recent Replanted Ancient Woodland
-  Recent Woodland Clearance





© Crown copyright and database rights 2016. Ordnance Survey 100019422. You are not permitted to copy, sub-license, distribute or sell any of this data to third parties in any form. Use of this data is subject to the terms and conditions shown at www.staffordshire.gov.uk/maps. Produced by Staffordshire County Council.

Scale: 1:20,000 Date : 22/09/2016

For Reference Use Only